



ISO 9001:2008 Certified Companies

4091 S. Eliot St., Englewood, CO 80110-4396 • 303-781-8486 • Fax 303-761-7939

Tubing Size 3/8" - 3/4"
3/8" Flow Polypropylene

60PP Series Couplings

These New 60PP Series couplings bring the highest available 3/8" flow with both valved and non-valved configurations. They are manufactured from medical grade, gamma sterilizable polypropylene. The cost efficient high flow couplings offer a larger, more robust thumb-latch and greater chemical resistance. The New and Improved Panel Mount couplings offer a stronger, more reliable design for thicker wall panels and other various applications. All 60PP couplings interconnect with all other 60 Series couplings as well as other similar industry thumb-latch type high flow couplings.



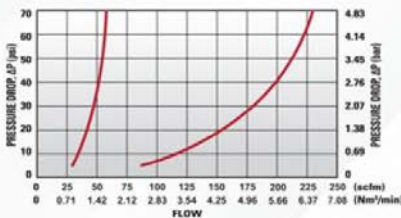
Performance Ratings:

- Operating Pressure: Vacuum to 60 psi; (4.2bar)
- Temperature: 32°F to 160°F (0°C to 71°C)
- Flow Capacity: 3/8" Size

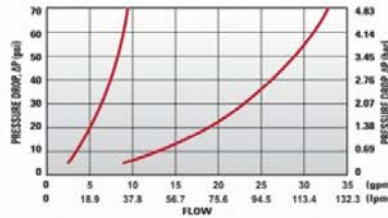
Materials & Construction:

- Bodies & Terminations: Medical Grade Polypropylene
- Internal Valves: Medical Grade Polypropylene
- Internal Valve Springs: 316 Stainless Steel
- External Springs & Pins: Stainless Steel
- O-rings: Peroxide-cured EPDM (others available)
- Thumb-latch: Medical Grade Polypropylene

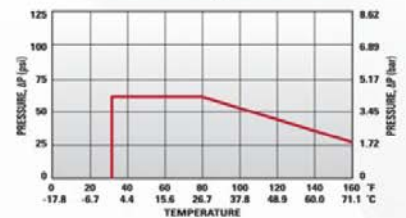
60PP Series Air Flow



60PP Series Water Flow



60PP Series Temperature



FLOW RATES

The data below shows liquid flow rates for LinkTech couplings. Each coupling combination was tested at 70°F (21°C).

C_v Values for 60PP Series Couplings

Specific coupling combination flow rates can be determined by using this formula:

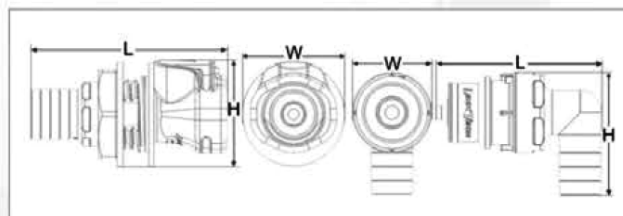
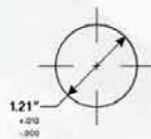
$$Q = C_v \sqrt{\frac{\Delta P}{S}}$$

Q = Flow rate in gallons per minute
C_v = Average flow rates (see chart)
ΔP = Pressure drop across coupling (psi)
S = Specific gravity of liquid.

SOCKETS	60PP-PE2-06	60PPV-PE2-06	60PP-PE2-08	60PPV-PE2-06	60PP-PE4-06	60PPV-PE4-06	60PP-PE4-08	60PPV-PE4-08	60PP-PE1-06	60PPV-PE1-06	60PP-PE1-08	60PPV-PE1-08	60PP-PE2-12	60PPV-PE2-12
60PPV-SE1-06	1.27	1.27	1.62	1.51	1.14	1.14	1.46	1.36	1.80	1.58	1.70	1.65	-	-
60PPV-SE1-08	1.28	1.34	1.62	1.51	1.15	1.24	1.46	1.36	1.81	1.54	1.72	1.56	-	-
60PPV-SE3-06	1.07	1.00	1.17	1.14	0.96	0.90	1.05	1.03	1.33	1.26	1.30	1.24	-	-
60PPV-SE3-08	1.25	1.23	1.61	1.52	1.13	1.11	1.45	1.37	1.79	1.60	1.68	1.56	-	-
60PPV-SE2-06	1.07	1.00	1.17	1.14	0.96	0.90	1.05	1.03	1.33	1.26	1.30	1.24	-	-
60PPV-SE2-08	1.25	1.23	1.61	1.52	1.13	1.11	1.45	1.37	1.79	1.60	1.68	1.56	-	-
60PP-S2-12	-	-	-	-	-	-	-	-	-	-	-	-	3.94	-
60PPV-SE2-12	-	-	-	-	-	-	-	-	-	-	-	-	-	2.04

	PANEL OPENING	MAX PANEL THICKNESS	MIN PANEL THICKNESS
SOCKETS	See Drawing	0.3"	0.03"
PLUGS	1.21"	0.3"	0.03"

PANEL NUT HEX SIZE
1.375"



Reference Dimensions: L = Length, W = Width, H = Height